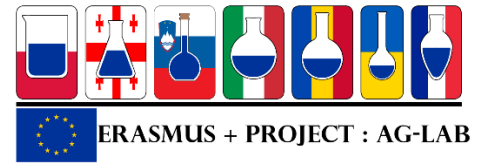




Co-funded by the  
Erasmus+ Programme  
of the European Union



## Questionnaire Analysis

Program Erasmus +, project KA2 n° 586383-EPP-1-2017-1-SI-EPPKA2-CBHE-JP  
(2017-2978/001-001)

1<sup>st</sup> Training Session

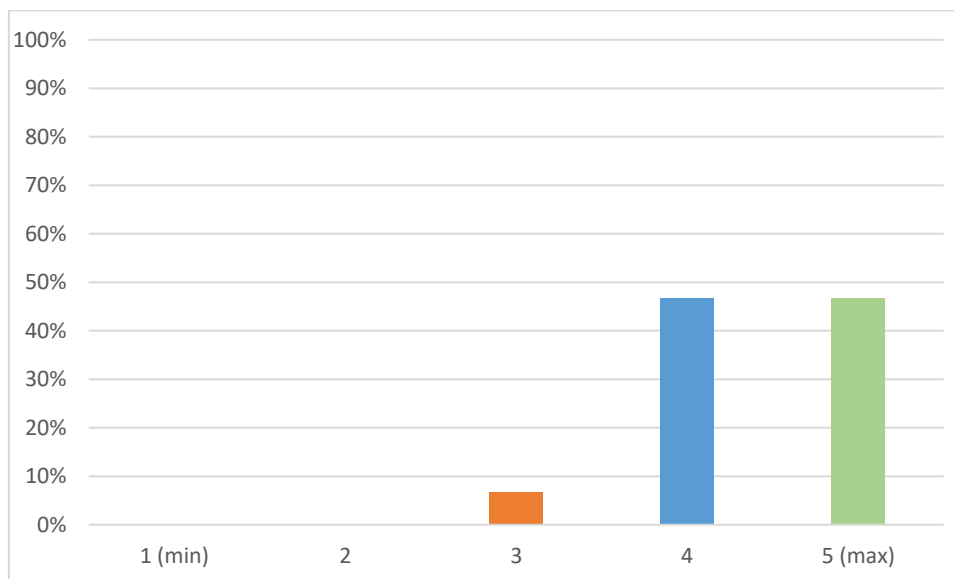
**AgLab**

*Kiev, 17-18<sup>th</sup> January, 2018*

The project progress surveys are one of the key tools to assure the project's quality and success. Conducted regularly by the QA team, they enable evaluation AgLab progress and delivery, by gathering open and anonymous opinions of project partners (the personal data is optional). The surveys are very important for the results to give the Project Management Team and the Consortium an early indication of problems and risks and of what could be done to address them.

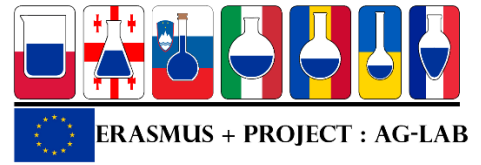
AgLab partners took part in the second project survey on January 18<sup>th</sup> 2018. The results are shown below.

To what extent did the objectives of the training satisfy your expectations?

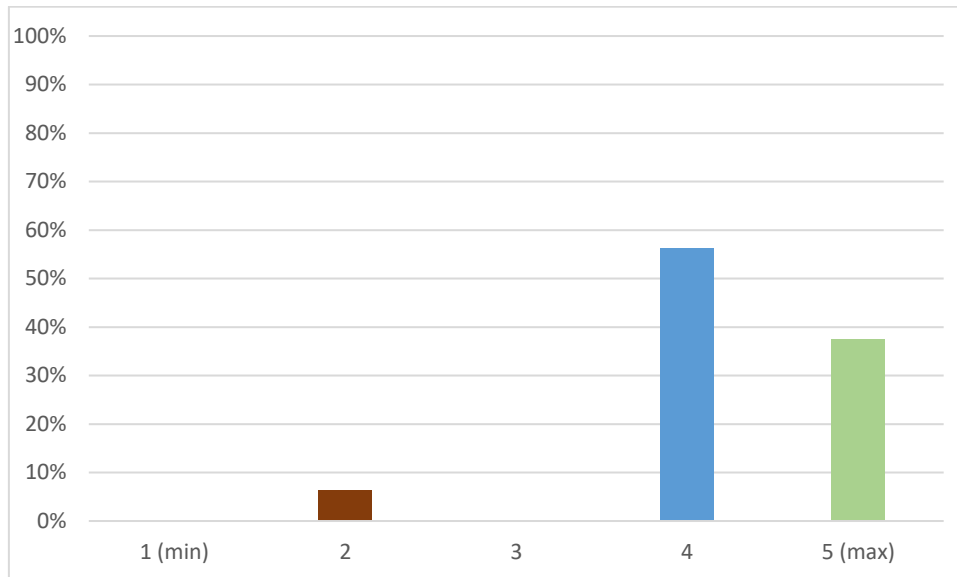




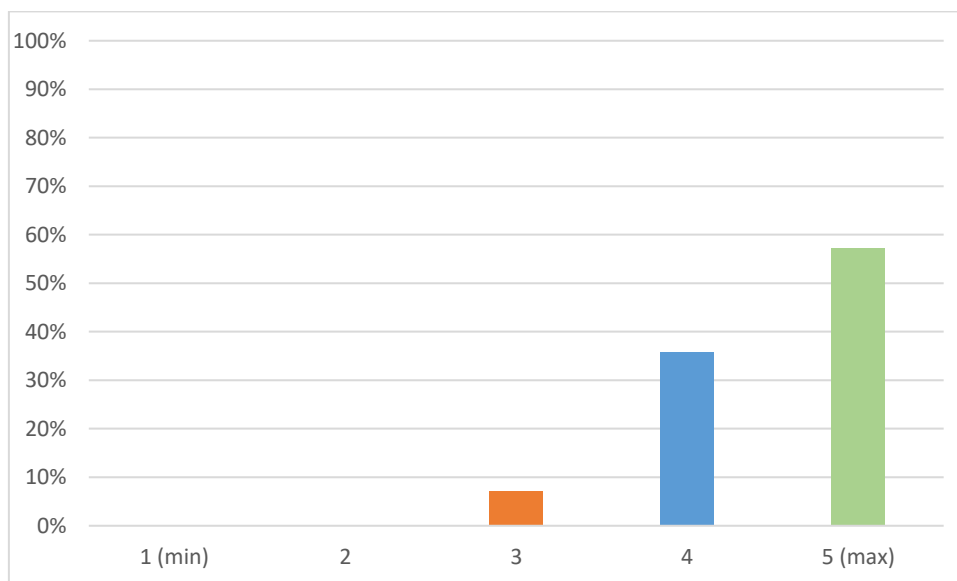
Co-funded by the  
Erasmus+ Programme  
of the European Union



To what extent the participation in the training was useful for your professional life?

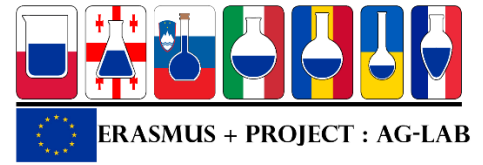


To what extent the participation in the training was useful for your institution?

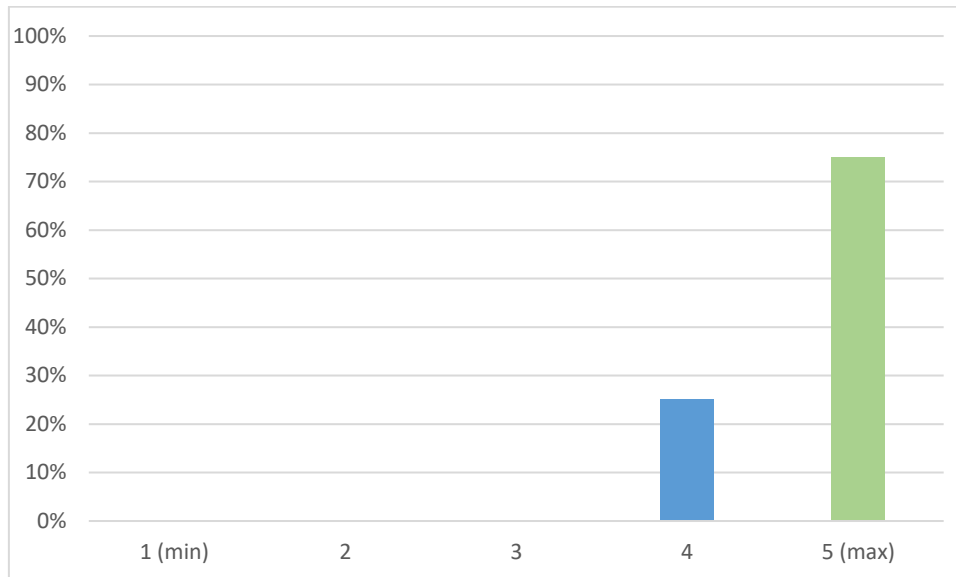




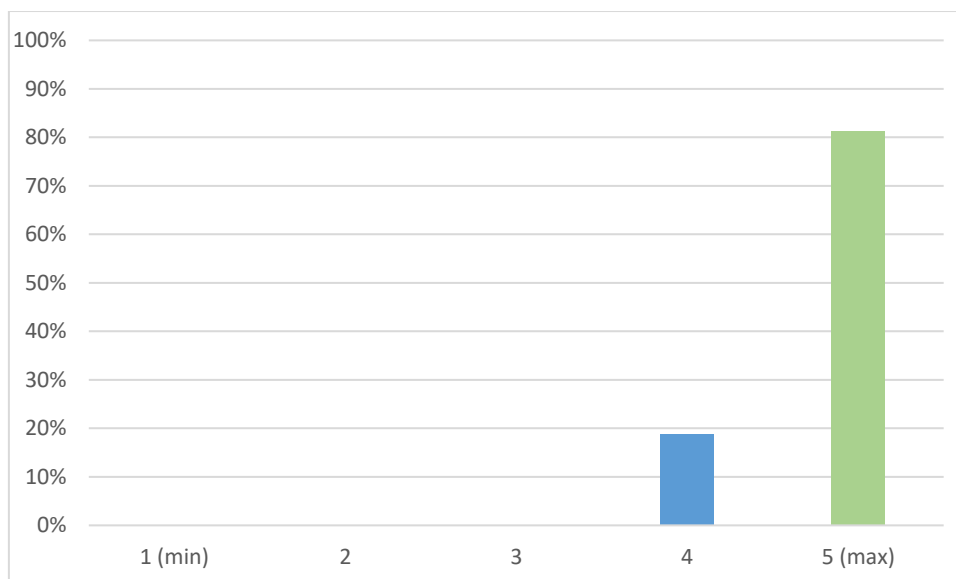
Co-funded by the  
Erasmus+ Programme  
of the European Union



To what extent the participation in the training was connected with the achievement of the objectives of AgLab project?

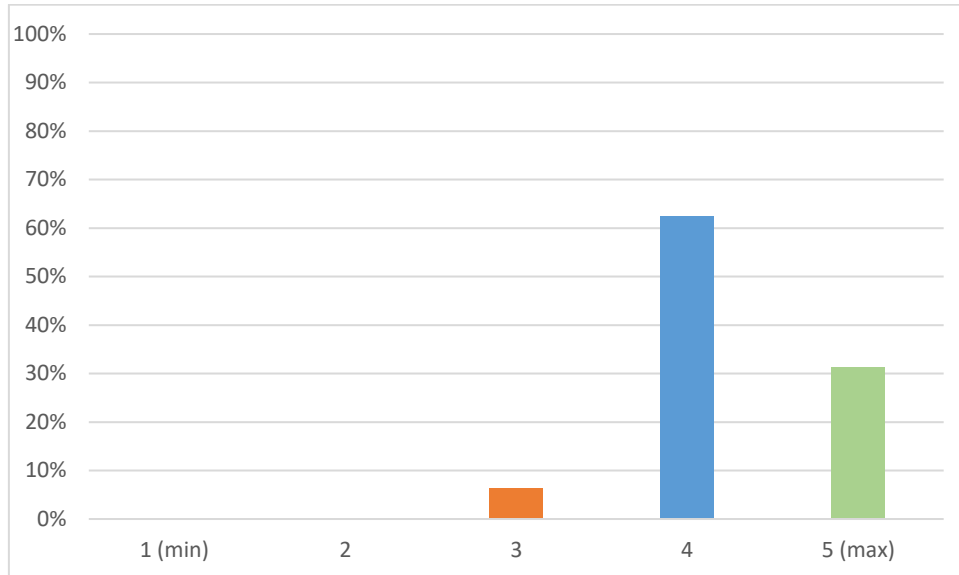


To what extent did the participation in the training allow you exchange opinions and experience with the partners?

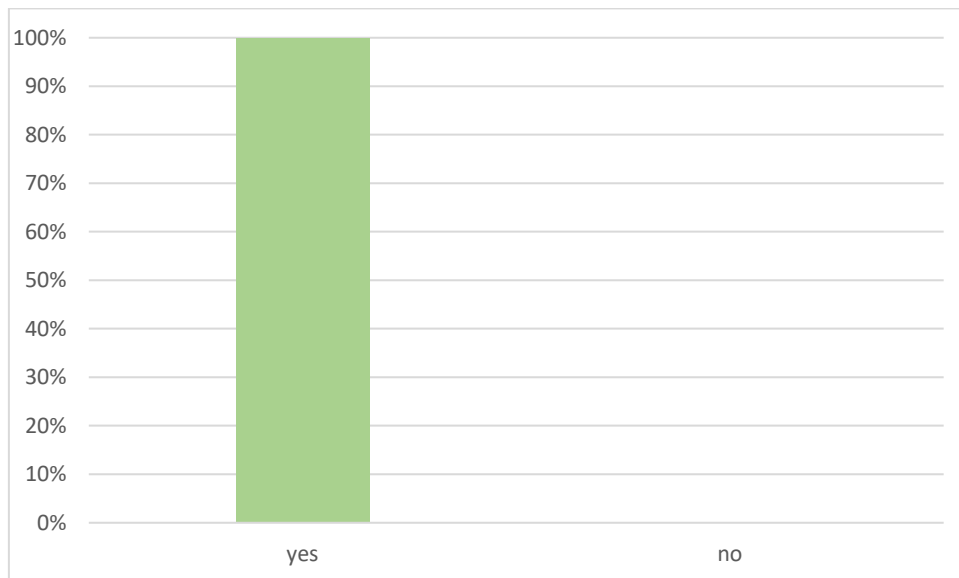




How do you mark the organization and the facilities at your disposal during the meeting?

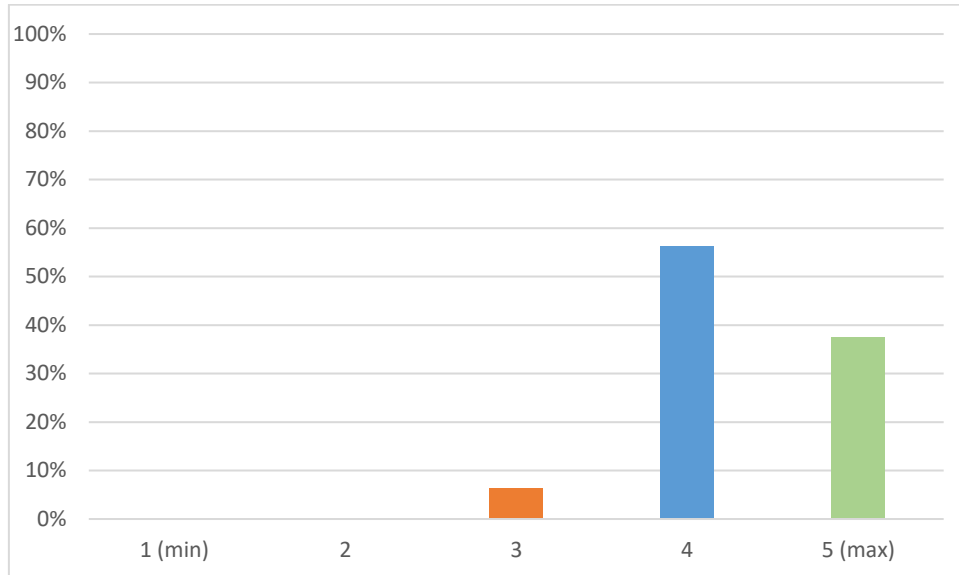


Did you receive the documentation about the meeting in due time?

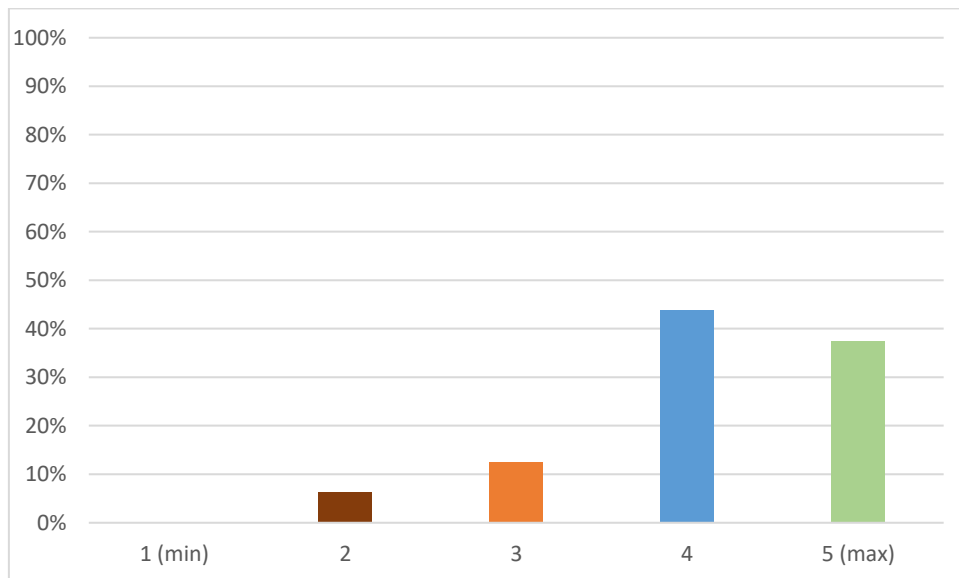




How would you assess the quality of the documentation?

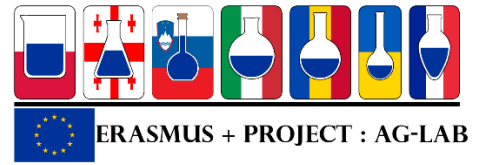


How would you evaluate the location of the meeting?

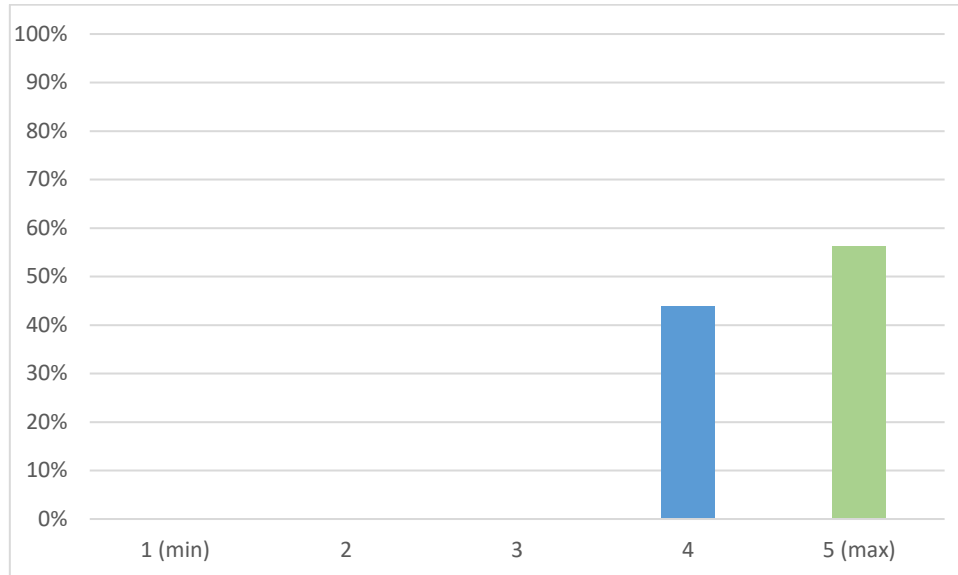




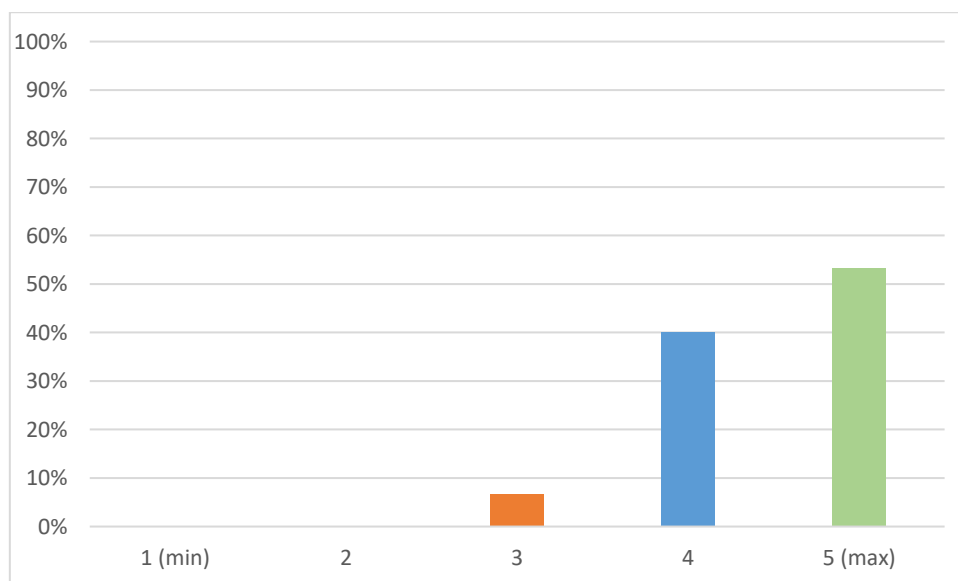
Co-funded by the  
Erasmus+ Programme  
of the European Union



How would you evaluate the social aspects of the meeting?



How would you generally evaluate the meeting?





## Open questions

### Which aspects of the meeting do you consider the best?

Communication and discussion x 5  
Validation of chemical analysis for contamination in food x 2  
Good quality presentations x 2  
The aims, objectives, participants  
All the discussed aspects during this meeting were useful  
The detailed explanation of project and planning of trainings

### Which aspect of the meeting do you consider the worst?

Not sticking to the schedule  
Many words little information about the peculiarities of laboratories  
Too long presentations of each partner  
Translation was very time-consuming

### Which aspects of the meeting do you consider the most useful?

Discussions and exchange of opinions x 3  
Exchange of views and skills thought  
Metrology provision of labs  
Information about accreditation  
Information about activities  
Meeting new partners, use of social events, out of schedule meetings to meet people and discuss  
Presentations about laboratories of Partner Countries.

### Which aspect of the meeting do you consider the less useful?

Translation process  
Too long presentations

### Which characteristics of the meeting contributed to its effectiveness?

Organizers x 2  
Discussions, communication x 2  
Ability to have knowledge and experience  
Informative character

### What advice would you give to the partner institutions so as to improve the results of the next meetings?

Providing presentations before meeting x 4  
To select participants with knowledge of English x 2  
Compliance with the programme x 2  
Printing the most important working materials x 2  
Informative presentations  
Visit to laboratories  
Involve more actively to gain maximum benefits of success